



**Coordination
Committee
Meeting
17/07**

Agenda:

- Update on River at a Glance report
- Logo for centres
- Pragyambu newsletter
- Website development
- Lead for remote sensing task group

Takeaway points

1. Share modified final draft of “River at a Glance” report before Monday, 22nd July.
2. Kindly use report by cCauvery for reference.
3. Share logo for centres by Monday, 22nd July.
4. Centres can either adopt same design developed by cCauvery and add respective institute logos, or can design a logo based on same format.
5. Share a representative to be added to website development team (ignore if already shared).
6. Dr. Satish Regonda (IITH) is in-charge of Remote Sensing task group.

Takeaway points

6. Share details of representative/s from institutes for hydraulic and hydrologic modelling task group.
7. Complete Pragyambu translation (editions 1 - 15).

Centre	Modified report received on	Suggestions
cMahanadi	09/07/2024	Include map of undisturbed, disturbed & vulnerable zones in the basin Reduce no. of pages
cNarmada	10/07/2024	Include more infographics (photos) Include map of undisturbed, disturbed & vulnerable zones in the basin
cGodavari	Yet to Receive	
cKrishna	17/07/2024	Include more infographics (photos for social and cultural significance) Include map of undisturbed, disturbed & vulnerable zones in the basin
cCauvery	13/07/2024	Include map of undisturbed, disturbed & vulnerable zones in the basin
cPeriyar	12/07/2024	Improve historical, cultural, economics significance

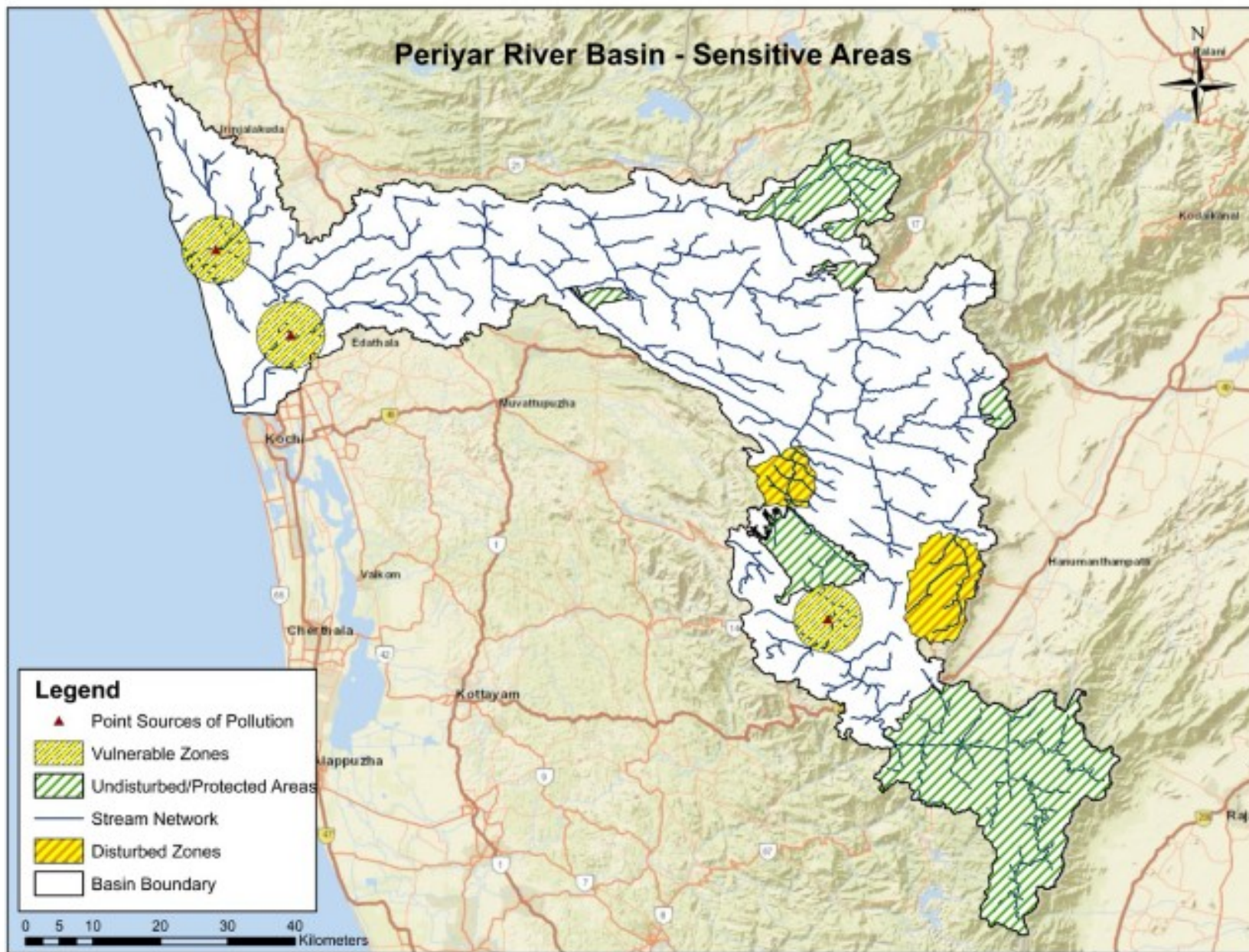


Fig. 15 Undisturbed, disturbed & vulnerable zones in the basin

Logo for centres

Circular Shape: The circular design represents unity and continuity, symbolizing the ongoing efforts to manage and preserve the Cauvery River Basin.

Flowing Lines: These lines represent the river itself, flowing gracefully within the circle. They convey the natural movement and life-giving properties of the river.

Calming Colours: The use of blue and green colours evokes a sense of calm and tranquillity, reflecting the serene nature of the river and its surrounding environment.

Small Boat/Fish: Including a small boat or fish symbolizes the life and activities that depend on the river, highlighting its importance to the local communities and ecosystems.

Simplicity: The logo is designed to be simple and easily recognizable, ensuring it can be effectively used across various platforms and media.



(Lead Institute)



(Fellow Institute)

cCauvery logo by IISc and NITT

